

Chillagoe Qld

2-1/2 hours West of CAIRNS

HISTORIC OUTBACK TOWN

EXPLORE ANCIENT LIMESTONE CAVES



Fairy Grotto - Donna Cave

Unique Accommodation Experience at

CHILLAGOE GUESTHOUSE - CIRCA 1906



Chillagoe - Early Days

A vast contrast to the Tropical Coast

Chillagoe - a historic Mining Town, rich in history.



On the 3rd September 1873 at Georgetown, North Queensland, a hand written notice was nailed to the bark wall of the Mining Warden's office

"J V Mulligan reports the discovery of payable gold on the Palmer River. Those interested may inspect at this office the 102 ounces he has brought back. "

The rush was on, and the pastoralists followed. The development of Far North Queensland had begun. Men from countries around the world toiled in an incredibly hot, hostile environment. Their mode of transport was basic. When work became scarce, or it was time to move on, they walked. Irvinebank to Chillagoe, Chillagoe to the Hodgkinson gold fields, or over the wild ranges to Mt Molloy.

Dad pushed a wheelbarrow in which were stacked all their belongings. A few pieces of iron, which would be used as shelter; maybe some hessian, a spade, a lantern, a few kitchen things and very little else. Mum and the children straggled behind, Mum, usually with a babe in arms. (Quote from old-timer Mr. Peel)

It is as a tribute to these pioneers, who trudged the dusty tracks, that this route has been named *The Wheelbarrow Way*. With little more than determination, they carved out a future and opened up the vast uncharted territory, just back o' Cairnsthe *Cairns Outback*.

Chillagoe, one hundred years ago hosted 13 hotels, two newspapers, a hospital and the population was over 10,000 people.

Today the history is evident throughout the town with numerous historic buildings and landmarks.

At Mungana the old township ruins stand tribute to the then hardworking men and women who came in search of prosperity from mining.



Chillagoe - Far North Queensland

A vast contrast to the Tropical Coast

Chillagoe - a historic Mining Town, rich in history.



Chillagoe is situated westward from Cairns and is a 2-1/2 hour drive from Cairns. There is plenty to see along the way so the journey may take up to 3 hours.

From Cairns the easiest route is Kuranda Range Road starting from Smithfield Shopping Centre.

Drive up the Range to Mareeba, take the “Wheelbarrow Way” to Dimbulah, onwards Almaden and arrive Chillagoe.

When you arrive in town you will instantly notice the tall chimney at the ruins of the old smelter which is iconic to Chillagoe. Entry is free and there is a Viewing Platform and car park on a high vantage point with informative plaques.

A great photo shoot opportunity.

Much fascinating information is revealed on how the pioneers toiled it in those days.



Today there are many surviving historic points of interest to be explored at your own leisure.

See the Railway Station, Bank Vault, Court House, Police Museum, Post Office & Post Office Hotel.

There is so much to see and do, to fully experience, go back in time and immerse yourself in the history of Chillagoe a two nights stay is recommended.

Chillagoe - Things to do

A vast contrast to the Tropical Coast

Chillagoe - a historic Mining Town, rich in history.

Visit Chillagoe Limestone Caves



Most popular activity is visiting and exploring the three Limestone Caves which are Guided by experienced Rangers from Queensland Parks & Wildlife.

Each cave is uniquely different, if you see one you will most likely want to see the other two. Over 14,000 people visit the caves each year. Tours operate everyday except Christmas day. Tickets can be purchased on arrival at the Information Centre located on Queen Street. Phone (07) 4094 7111 for more information.

Explore Mungana Ruins & Self Guided Caves

Mungana Archways are 16.5Kms westward. Heading off the highway, you will come across Aboriginal Paintings at 1.1Kms then a little further on are the self guided caves.

As you enter on a downward slope, you will feel a sudden change in temperature, quite refreshing. Further in, there is a squeeze hole which is worth going through as there is a splendid auditorium beyond and is perfect for a picnic.



Visit Walsh River Crossing



Grab your fishing rod, a picnic lunch and your swimming attire then head out of town on an adventure!..

Drive toward Normanton, at 6.4Kms you cross a disused railway line, at 16Kms you pass the Mungana Old Township turnoff, at 24Kms you will pass the Blackwood Station turnoff, at 30.5Kms you cross Rookwood Creek.

Continue straight on and at 32Kms you arrive at the Walsh River Crossing.

Chillagoe - Things to do

A vast contrast to the Tropical Coast

Chillagoe - a historic Mining Town, rich in history.

Cool off at the Bogey Hole



A pleasant way to cool off after a day of exploring. This spot is popular with the local children and visitors all year round. Bring a picnic lunch and enjoy the shady paperbark trees at the waters edge.

A picnic table is provided for your convenience.

An easy walk from the centre of town.

Swim at the Historic Weir

The Weir is also popular for cooling off .

Situated below the smelter site, it was purpose built to ensure adequate uninterrupted supply of water for the smelter operations and township.

There are remnants of the steam driven pump foundations on the opposite Creek Bank.



Relax at Chillagoe Guesthouse



At the end of a day of exploration, relax on the verandah at the “Historic Chillagoe Post Office” now the Chillagoe Guesthouse.

Soak up the aura of the outback or simply cross the road and join the locals for a cold beer or a glass of wine and a yarn at either of the two local Hotels.

CHILLAGOE GUESTHOUSE

Historic Post Office Built 1906



Chillagoe Post Office built in 1906, ceased trading in 1991.

Today it retains its character and Grandeur located in the centre of town and provides accommodation surrounded by history.

Walking distance to shops, hotels, places of interest and the Visitor Info Centre.

Complimentary WIFI and a family size outdoor Barbeque.

Our Premium Accommodation is the Self Contained Unit of 1 or 2 Bedrooms and recommended it for a relaxing two night stay.

Standard Accommodation is in motel style rooms with shared facilities, we have one room (room 6) with an en-suite.

All rooms have Queen beds, quiet split system air conditioning and room fridges.



The building comprises of two separate Living areas separated by a soundproof wall.

A veranda provides external access to individual rooms.

Outside breakfast tables, laundry and BBQ are provided.

Laundry facilities, off street parking and WIFI are complimentary.



Reservations



Reservations: (07) 4222 1600
www.chillagoeguesthouse.com.au/bookings.html

CHILLAGOE GUESTHOUSE

Historic Post Office Built 1906



Our two kitchens are fully equipped which enable guests to create home cooked meals.

Large modern fridge and electric oven.

The rear kitchen has a dishwasher.

The dining areas are spacious with plenty of seating inside or outdoors on the shady deck.

Ideal for business travellers and family weekend getaways.

A full house accommodates up to 13 people.



Chillagoe weather can be extremely hot at certain times of the year.

The verandas on the East and West sides of the building ensure that there are plenty of shaded areas throughout the day.

Relax, enjoy a cool drink, read a book and soak up the cool evening breeze.



Website



Please visit our website for full information & photo gallery

Reservations: (07) 4222 1600

www.chillagoeguesthouse.com.au

enquiry@chillagoeguesthouse.com.au

Frequently Asked Chillagoe Questions



Where do I book Cave Tours?

At the HUB Information Centre located diagonally across the road from the Chillagoe Guesthouse.

Or call the Information Centre on 4094 7111
Tours operate everyday except Christmas day
Pre-purchasing tickets is recommended but not necessary.

What's the Road Like?

The Bourke Development Road is sealed all the way to Almaden.

The last 30kms between Almaden and Chillagoe is partly sealed. It has several sections of gravel surface & suitable for 2WD.
Use extra caution following rain and be aware that Road Trains also share the road.



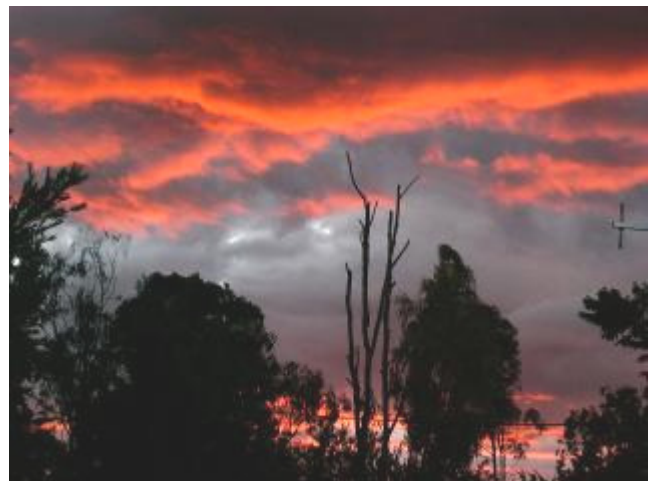
What do we need to bring?

If you are staying at Chillagoe Guesthouse, we provide linen, towels and basic toiletries. Our fully equipped kitchens have crockery, cutlery, and cooking utensils.

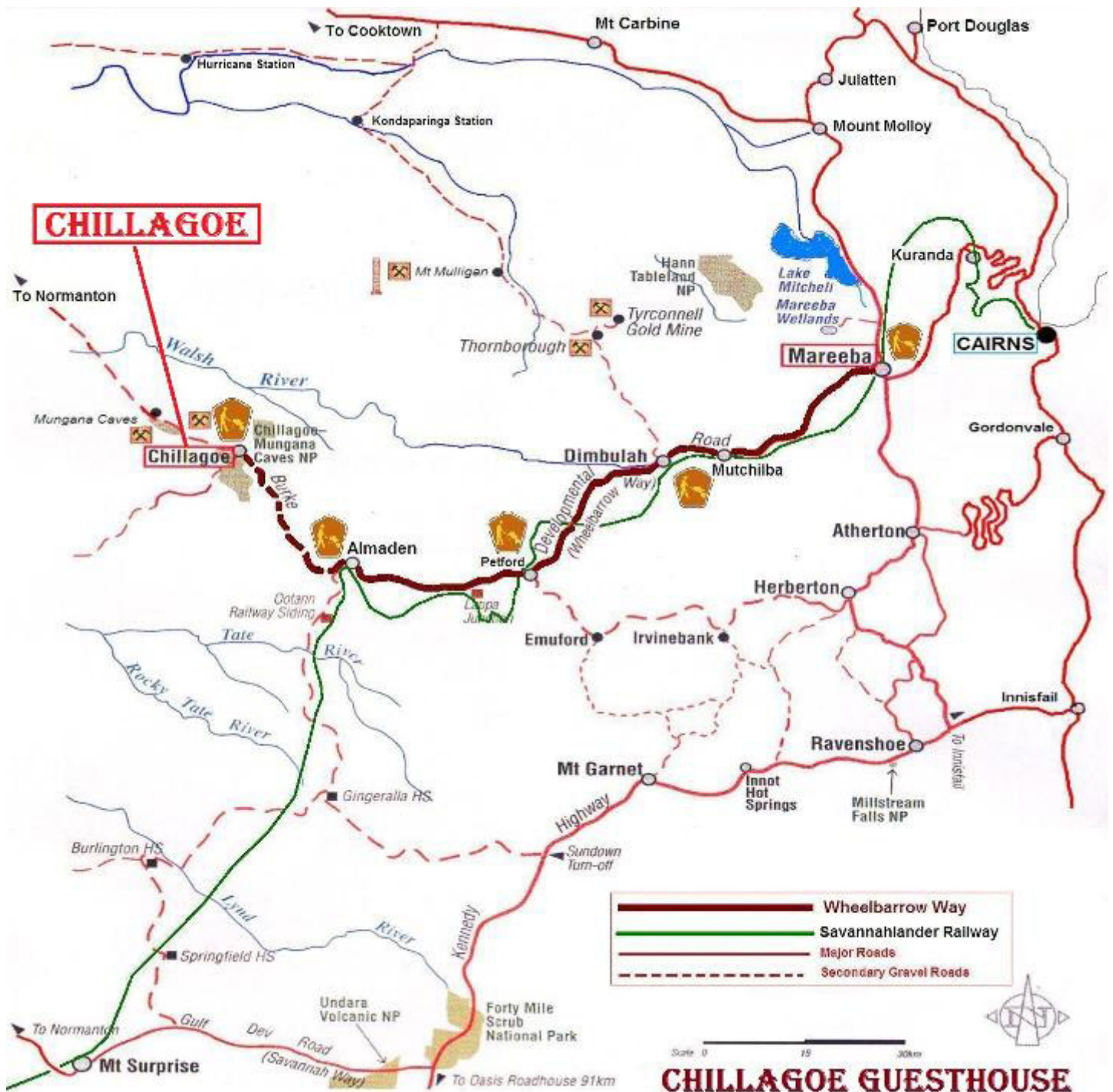
Also 4 burner stoves, oven and outdoor BBQ
Consider bringing groceries to prepare your favourite meals in-house.

Can you answer these questions?

1. Where are the Drop Bears in Chillagoe?
2. Where is the Police Station?
3. Does Chillagoe recycle plastics & glass?
4. Who is the Mayor?
5. What time does the sun come up?
6. Which end of town does the sun set?
7. What is meant by "free beer tomorrow"?
8. How many caves are in the district?
9. What was your Cave Tour guides name?



Where is Chillagoe ?? - Queensland Australia



CHILLAGOE GUESTHOUSE

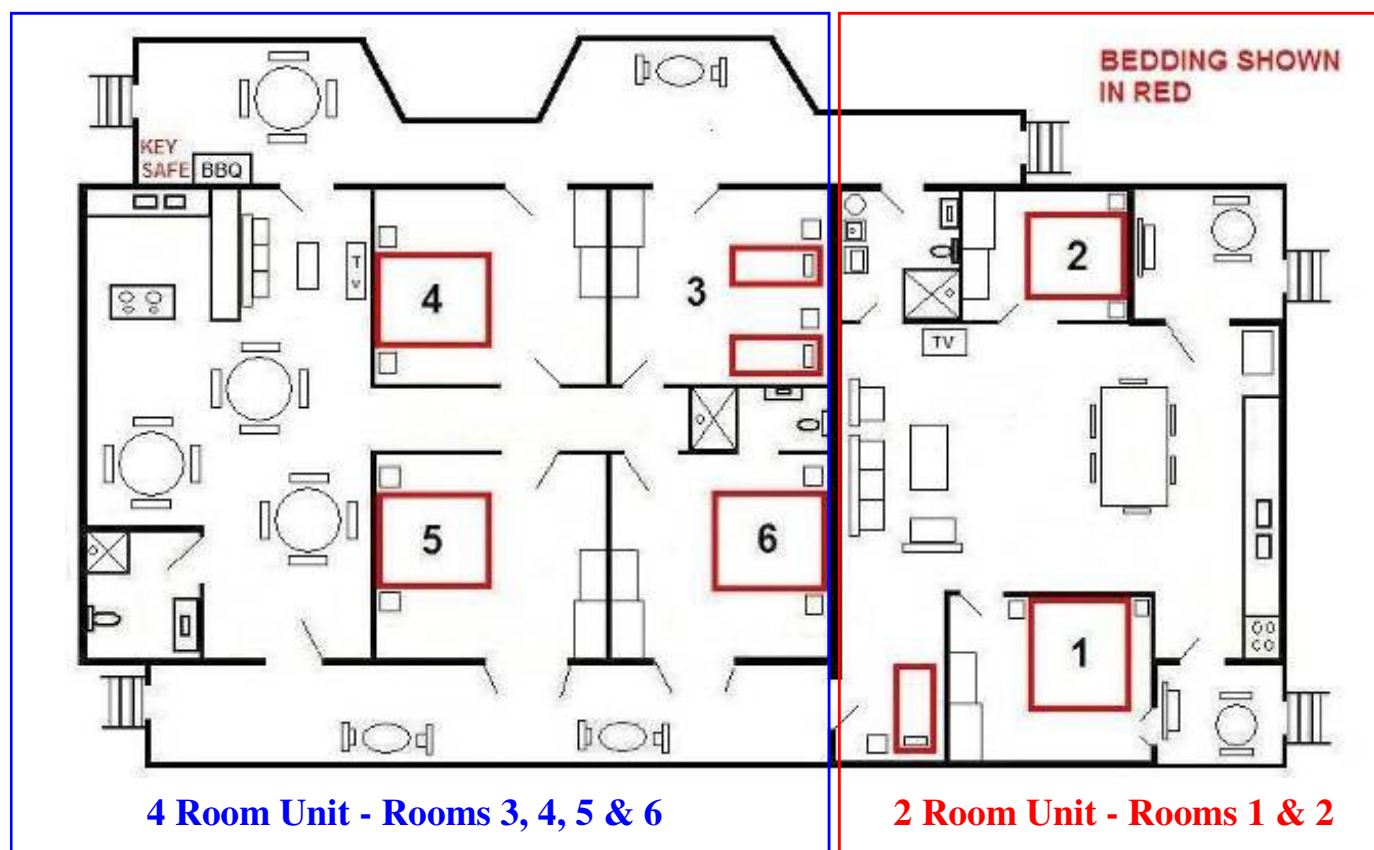


Website

Our Reviews

QLD Parks

Guesthouse - Floor Plan & Room Locations



ACCOMMODATION OPTIONS, CHOOSE FROM:-

- Double Room Standard (Rooms 1, 2, 4, or 5)
- Double Room En-Suite (Room 6 only)
- Twin Room (Room 3 only)

FOR FAMILY OR GROUP ACCOMMODATION, CONSIDER:-

- 4 Room Self Contained Unit - Sleeps up to 8
- 2 Room Self Contained Unit - Sleeps up to 5

NOTES: _____

Reservations



Please visit our website for full information & photo gallery

Reservations: (07) 4222 1600
www.chillagoeguesthouse.com.au
enquiry@chillagoeguesthouse.com.au

Chillagoe Guesthouse Check-In Procedure

CHECK-IN:- 2:00pm CHECK-OUT:- 10:00am

Normally there are no staff present, at this point you will have received your “Arrival Information” and Reservation Tax Invoice via Email.

Your Reservation-Tax Invoice has a four digit Key-Code(s) required to gain access.

Please make sure you have the information with you.

Retrieve your keys from Key Safes that are located at the Laundry on the rear Veranda.
(Picture of Key Safes shown below)

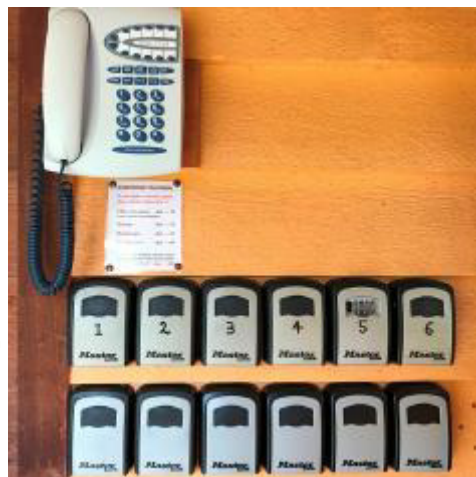
CAR PARKING

Entry is via Gateway in Cathedral Street, you may park anywhere you wish on the lawn.

GENERAL INFORMATION

You will find all you need to prepare your own meals in the kitchen.

The bottled water in your room is also complimentary.



KEY RETRIEVAL

To open safe, pull down the cover flap corresponding with your room number.

Rotate numbers to coincide with the code provided and then pull down on the small lever to open.

For assistance, use the house phone above the Key Safes to call reception by dialing 7#

CONTACT NUMBERS

CHILLAGOE GUESTHOUSE

4222 1600

CAVE TICKETS

4094 7111

HOSPITAL

4094 7500

POLICE

4094 7120





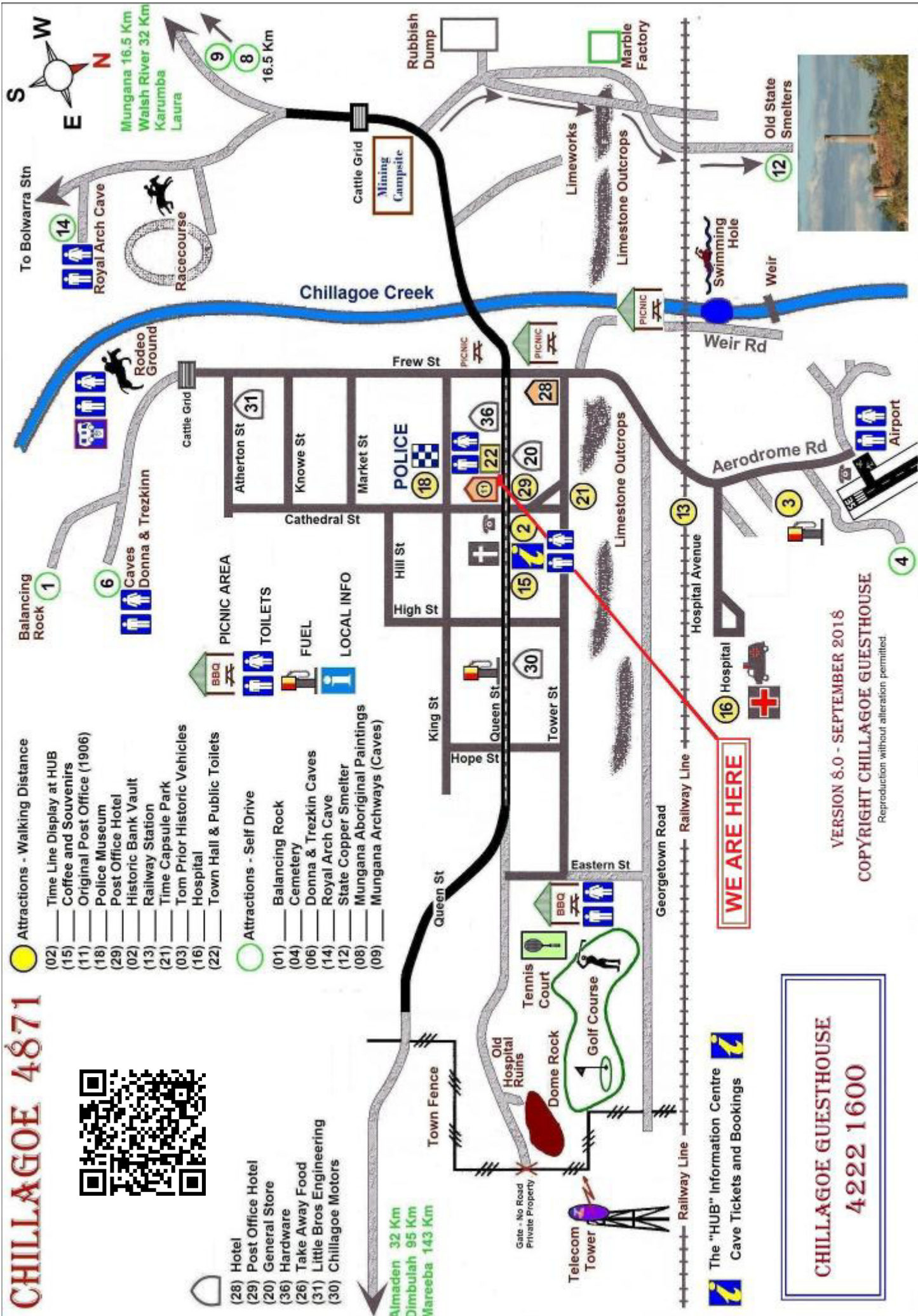
Attractions - Walking Distance

- (02) Time Line Display at HUB
- (15) Coffee and Souvenirs
- (11) Original Post Office (1906)
- (18) Police Museum
- (29) Post Office Hotel
- (02) Historic Bank Vault
- (13) Railway Station
- (21) Time Capsule Park
- (03) Tom Prior Historic Vehicles
- (16) Hospital
- (22) Town Hall & Public Toilets

Attractions - Self Drive

- (01) Balancing Rock
- (04) Cemetery
- (06) Donna & Trezkin Caves
- (14) Royal Arch Cave
- (12) State Copper Smelter
- (08) Mungana Aboriginal Paintings
- (09) Mungana Archways (Caves)

- (28) Hotel
- (29) Post Office Hotel
- (20) General Store
- (36) Hardware
- (26) Take Away Food
- (31) Little Bros Engineering
- (30) Chillagoe Motors



VERSION 8.0 - SEPTEMBER 2018

COPYRIGHT CHILLAGOE GUESTHOUSE

Reproduction without alteration permitted.

CHILLAGOE GUESTHOUSE

4222 1600